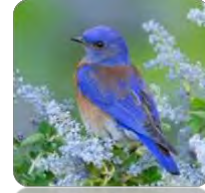
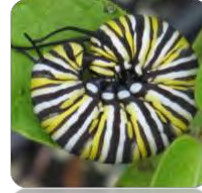


Flora for Fauna Symposium
Friday, November 17, 2017, 8:00 a.m. – 4:30 p.m.
Farmingdale State College, Roosevelt Hall



Long Island Native Plant Initiative

Bridging the Gap by Going to Seed...



4th Native Plant Symposium

“Flora for Fauna”

November 17, 2017

Roosevelt Hall

Farmingdale State College, Farmingdale, N.Y.

- 8:00 a.m.** Sign in, Refreshments and Educational Exhibits
- 8:45 a.m.** Welcome and Introductory Comments
- 9:00 a.m.** **Flora for Fauna** - *Arthur Haines, Research Botanist, New England Wild Flower Society; Director, the Delta Institute of Natural History; Data Overseer, Go Botany website; Author of the new flora, “Flora Novae Angliae”, Camden, ME.*
- 10:15 a.m.** Coffee Break - Visit Exhibits
- 10:30 a.m.** **What Native Cultivars Are and Their Impact on Native Flora and Fauna** - *Rusty Schmidt, Landscape Ecologist, Nelson Pope and Voorhis- Melville NY ; President, Long Island Native Plant Initiative, Hampton Bays, NY. Adjunct Professor, Horticulture Department at Farmingdale State College, Farmingdale, NY.*
- 11:00 a.m.** **Enhancing Highways: Lessons from the Roadside** - *Dr. Susan Barton, Professor and Extension Specialist in the Plant and Soil Sciences Department at the University of Delaware, Newark, DE.*
- 11:45 a.m.** **Tough Plants for Tough Places: Improving Biodiversity in the Built Landscape**
Mr. Michael Butts, Foundation & Bulk Seed Manager, Greenbelt Native Plant Center, NYC Parks Department, Staten Island, NY.
- 12:30 p.m.** **Lunch (provided) and Trade Show**
- 1:30 p.m.** **Audubon's Plants for Birds: Plant It and They Will Come**
Mr. Tod Winston, Program Manager, Plants for Birds, National Audubon, New York, NY.
- 2:15 p.m.** **Invertebrate Dynamics and Pollinator Presence in Urban Plantings**
Dr. Anand Persad, Researcher/Lecturer and Manager of Arboriculture and Plant Sciences, Davey Institute, Kent, OH.

Flora for Fauna Symposium
Friday, November 17, 2017, 8:00 a.m. – 4:30 p.m.
Farmingdale State College, Roosevelt Hall

3:00 p.m. Coffee Break - Visit Exhibits

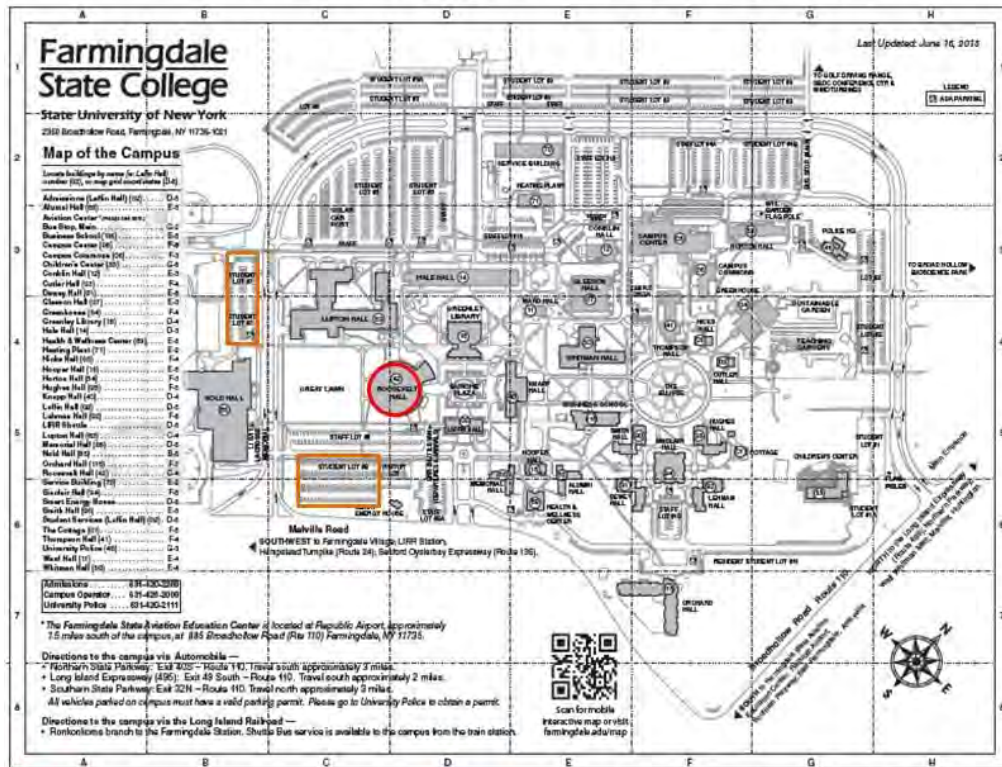
3:15 p.m. When does Grassland Restoration do more Harm than Good?
*Ms. Polly Weigand, Executive Director, Long Island Native Plant Initiative Hampton Bays, NY.
 Ecologist, Central Pine Barrens Joint Planning and Policy Commission, Westhampton Beach, NY*

4:15 p.m. Program Wrap Up and CEU Distribution

Parking and Location Map:

Please note that a parking pass will be emailed to you a week prior to the conference with registration and that permitted parking is in only the below highlighted general or visitor parking areas (in orange). The Native Plant Symposium Venue is located at Roosevelt Hall (highlighted in red).

LINPI Native Plant Symposium Parking and Venue Map



- Roosevelt Hall = Native Plant Symposium Venue
- Symposium Parking in General or Visitor Lots Only – No Parking in Faculty Lots

To Register go to: www.LINPI.org or <https://tinyurl.com/LINPINativePlantSymposium>

For More Information Contact:

LINPI - PO Box 1279, Hampton Bays, NY 11946 (631) 260-1513 - info@LINPI.org - www.LINPI.org